

xpuc



Special helmet holder suitable for back bar.



The helmet holders were made to customer's specifications in three heights: 270 mm, 440 mm and 560 mm.

1

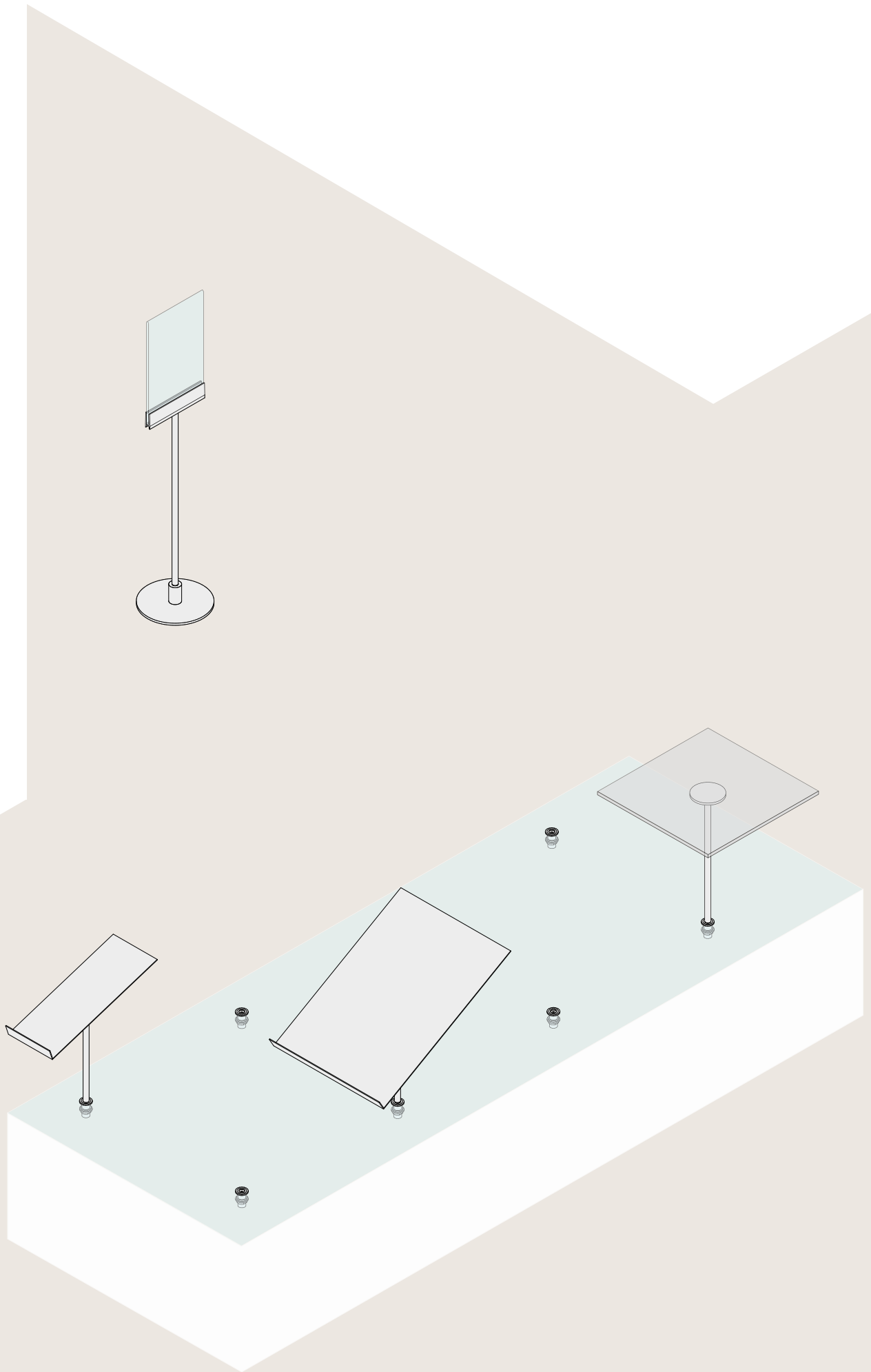
The xpuc socket is installed into horizontal panels. Everything for the vertical can be produced as per your request.

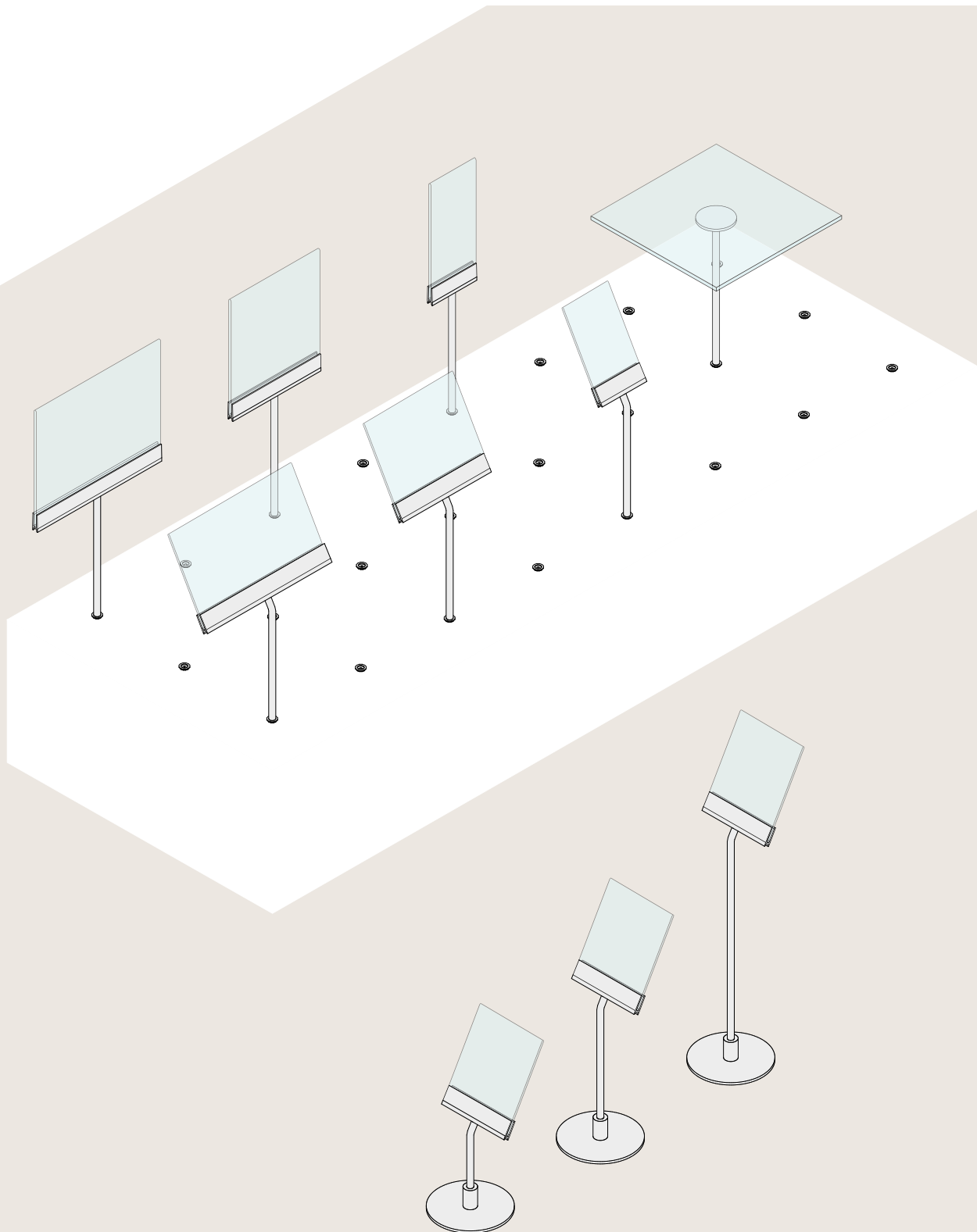


2
X

1

1
X





xpuC12 – the round socket is mounted in horizontal presentation surfaces made of wood or glass. These interesting fittings are designed for a modern and flexible merchandising. The xpuC12 socket can be placed at various positions in the store – in the shop window, at the cash desk or on display tables – and the accessories can be interchanged and extended.

**Appliance:**

Single point carrier system for installation into horizontal wooden panels with a thickness of 8 – 24 mm and safety glass with a thickness of 8 – 16 mm.

Materials and surfaces:

stainless steel, satin finish

Planning details:

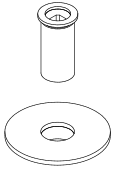
Technical data for installation and drawings are available for download on shop-systems.com.



1

2

1

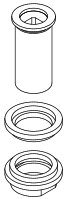
**xpuc12 carrier socket**

for wooden panels of 8 – 24 mm thickness,
incl. flange lock nut,
adjustment of the fittings in 90° steps

Ø 19, D 35,5

XP 012 100 02
zinc diecasting, appearance
of stainless steel

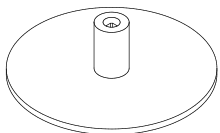
2

**xpuc12 carrier socket**

for safety glass panels of 8 – 16 mm thickness,
incl. 2 plastic spacers and diecasting flange lock
nut, adjustment of the fittings in 90° steps

Ø 19, D 35,5

XP 012 101 02
zinc diecasting, appearance
of stainless steel

**mobile base**

for xpuc12 fitting elements

Ø 150, H 45

XP 012 809 01
stainless steel, satin finish

	sign holder A4 landscape format, straight, for acrylic folders	H 100 H 250 H 400 Ø 12	XP 012 423 01 XP 012 419 01 XP 012 420 01 stainless steel, satin finish
	sign holder A4 portrait and A5 landscape format, straight, for acrylic folders	H 100 H 250 H 400 Ø 12	XP 012 424 01 XP 012 417 01 XP 012 418 01 stainless steel, satin finish
	sign holder A5 portrait and A6 landscape format, straight, for acrylic folders	H 100 H 250 H 400 Ø 12	XP 012 425 01 XP 012 415 01 XP 012 416 01 stainless steel, satin finish
	sign holder A6 portrait format, straight, for acrylic folders	H 100 H 250 H 400 Ø 12	XP 012 426 01 XP 012 413 01 XP 012 414 01 stainless steel, satin finish
	sign holder A4 landscape format, 30° slanted, for acrylic folders	H 100 H 250 H 400 Ø 12	XP 012 427 01 XP 012 411 01 XP 012 412 01 stainless steel, satin finish
	sign holder A4 portrait and A5 landscape format, 30° slanted, for acrylic folders	H 100 H 250 H 400 Ø 12	XP 012 428 01 XP 012 409 01 XP 012 410 01 stainless steel, satin finish
	sign holder A5 portrait and A6 landscape format, 30° slanted, for acrylic folders	H 100 H 250 H 400 Ø 12	XP 012 429 01 XP 012 407 01 XP 012 408 01 stainless steel, satin finish
	sign holder A6 portrait format, 30° slanted, for acrylic folders	H 100 H 250 H 400 Ø 12	XP 012 430 01 XP 012 405 01 XP 012 406 01 stainless steel, satin finish



1, 2, 3, 4

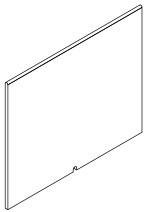


5



6

4



+ acrylic folder
for sign holder,
made of 3 mm acrylic glass, bended

A4 →
A4 ↑
A5 →
A5 ↑
A6 →
A6 ↑

ZU 003 801 07
ZU 003 800 07
ZU 003 803 07
ZU 003 802 07
ZU 003 805 07
ZU 003 804 07
acrylic glass

5



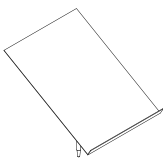
deco shelf carrier
for wooden and glass shelves,
shelves can be glued, delivery without shelf

H 300
H 500
Ø 70

XP 012 401 01
XP 012 402 01
stainless steel, satin finish



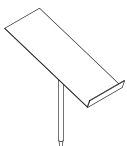
6



shirt tray
30° slanted

H 250
H 400
L 400, W 300

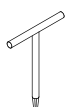
XP 012 403 01
XP 012 404 01
stainless steel, satin finish



shoe tray
18° slanted

H 250
H 400
L 300, W 120

XP 012 421 01
XP 012 422 01
stainless steel, satin finish



mounting tool
for adjustment and interlock of the socket in
round holes, e.g. in glass or steel

Ø 12, H 150, W 130
XP 012 900 06
steel, matt chrome